



6, Lydham Road, Heath Farm, Shrewsbury, SY1 3HQ
£1,050 Per Month



6, Lydham Road, Heath Farm, Shrewsbury, SY1 3HQ

£1,050 Per Month

VIRTUAL TOUR AVAILABLE - Modern three bedroom semi detached family home, quietly situated in this popular residential area of Shrewsbury.

Available: 26/06/25

Description

Comprising: Entrance hall, large modern kitchen including double oven and gas hob, dining area with double doors to rear, living room. Stairs to first floor landing including airing cupboard, two double bedrooms with wardrobes, single bedroom, modern bathroom including shower. Oversized single garage, driveway parking for two cars. Front and rear garden laid to lawn. Double glazing, gas central heating. EPC C



Unfurnished

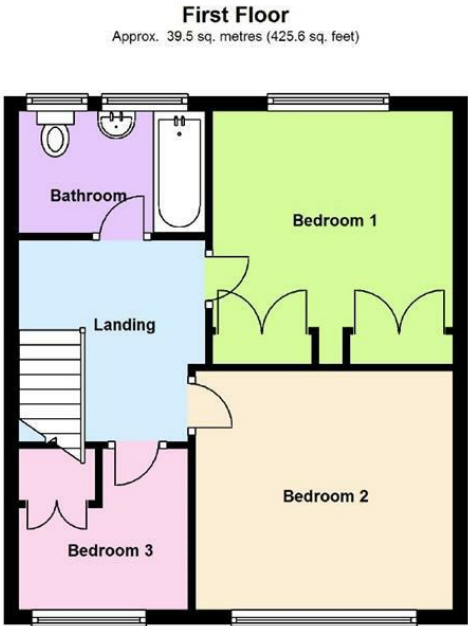
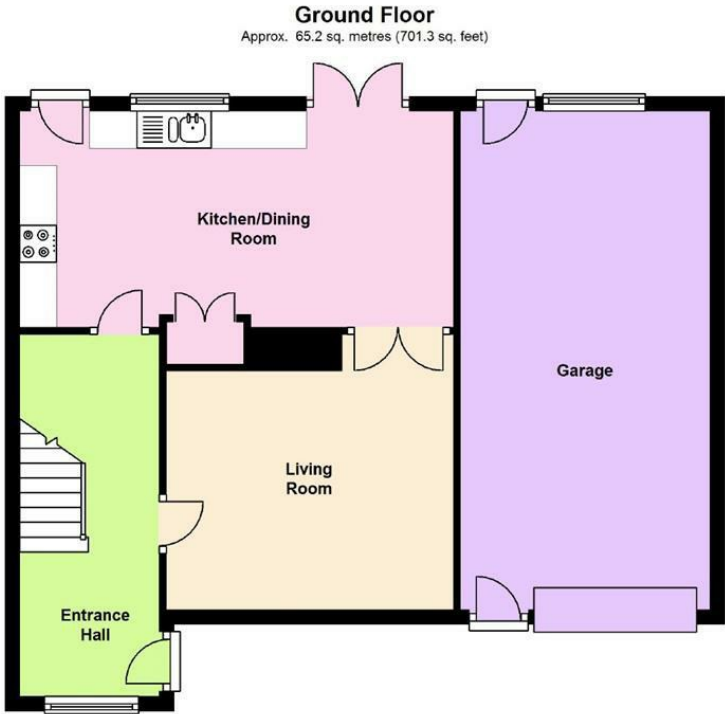
Council Tax Band: B

Available: 26th June 2025

EPC: C



Floor Plans



Total area: approx. 104.7 sq. metres (1126.9 sq. feet)

We accept no responsibility for any mistake or inaccuracy contained within the floorplan. The floorplan is provided as a guide only and should be taken as an illustration only. The measurements, contents and positioning are approximations only and provided as a guidance tool and not an exact replication of the property.
Plan produced using PlanUp.

These particulars, whilst believed to be accurate are set out as a general outline only for guidance and do not constitute any part of an offer or contract. Intending purchasers should not rely on them as statements of representation of fact, but must satisfy themselves by inspection or otherwise as to their accuracy. No person in this firms employment has the authority to make or give any representation or warranty in respect of the property.